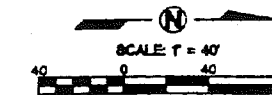


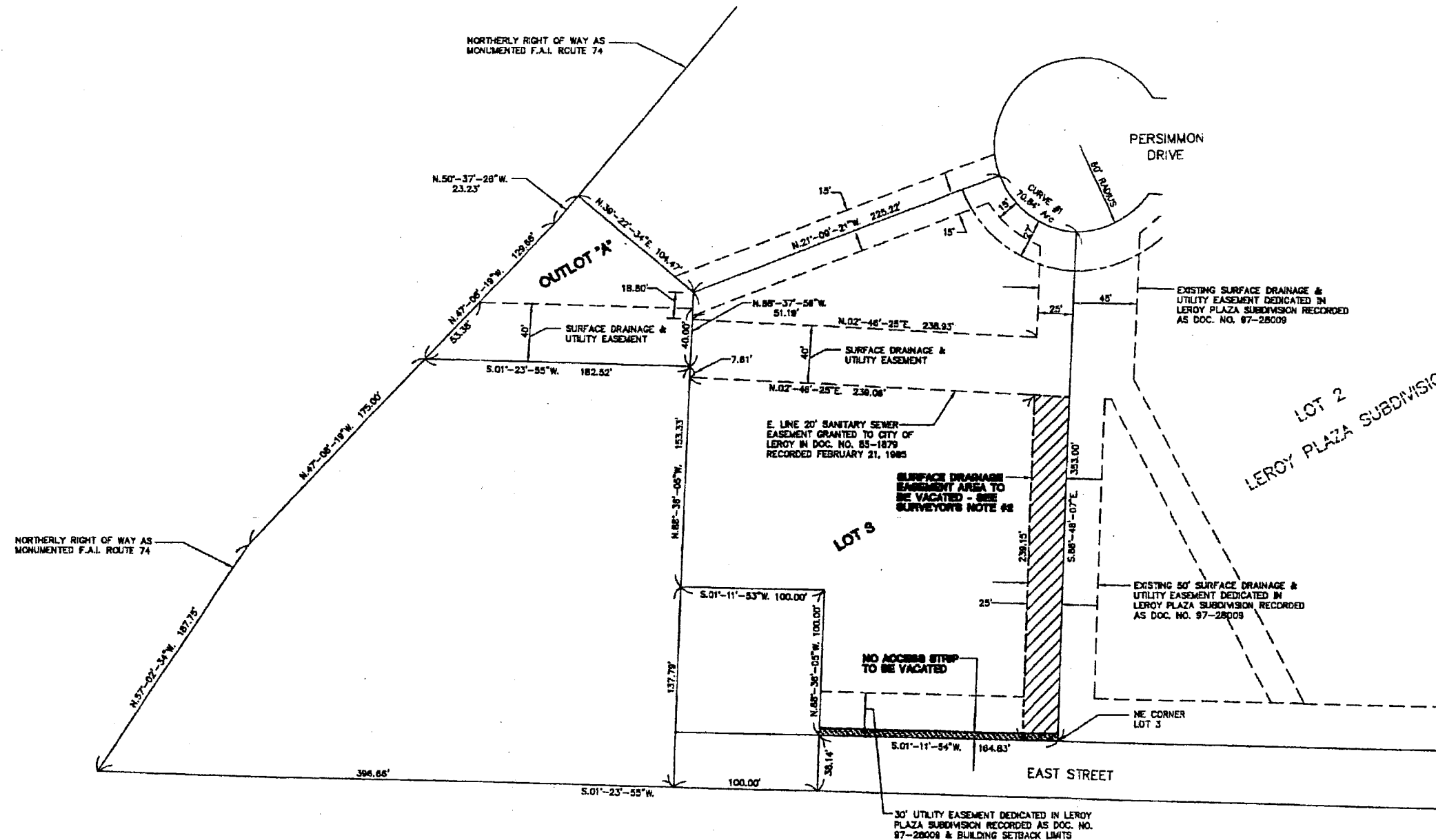
VACATION PLAT

PART OF LOT 3 LEROY PLAZA SUBDIVISION 1ST ADDITION OF THE W1/2 OF THE NW1/4 OF SEC. 28, T22N, R4E, 3PM,
CITY OF LEROY, MCLEAN COUNTY, ILLINOIS



LEGEND

	EASEMENT LIMITS LINE
	BUILDING SETBACK LINE
	NO ACCESS STRIP AREA TO BE VACATED
	SURFACE DRAINAGE EASEMENT AREA TO BE VACATED



MUNICIPALITY APPROVAL

We, the undersigned, Mayor and City Clerk of the City of LeRoy, McLean County, Illinois, do hereby certify that this vacation plat for a portion of Lot 3 in LeRoy Plaza Subdivision 1st Addition to the City of LeRoy was approved by the City Council on the _____ day of _____, 20__.

Gary Koerner (Mayor)

Sue Marcum (City Clerk)

Surveyor's Notes

- The parties requesting the herein depicted survey did not furnish any evidence of title. There may be easements or other matters of record affecting the subject premises of which I am unaware and these matters, if any, are therefore not shown.
- In the area in which the right of surface drainage easement is to be vacated, the utility easement rights shall remain.
- The lot dimensions, easement lines and setback lines for Lot 3 as depicted herein are as shown on the record plat of LeRoy Plaza Subdivision 1st Addition, recorded as Document No. 98-3458 in the McLean County Recorder of Deeds Office.

Legal Description - Surface Drainage Easement Area to be Vacated

The North 25 feet of the East 238.15 feet of Lot 3 in LeRoy Plaza Subdivision 1st Addition in the W1/2 of the NW1/4 of Section 28, Township 22 North, Range 4 East of the Third Principal Meridian, City of LeRoy, McLean County, Illinois.

Legal Description - No Access Strip to be Vacated

All that part of the No Access Strip in the East side of Lot 3 in LeRoy Plaza Subdivision 1st Addition adjoining the west right of way line of East Street, in the W1/2 of the NW1/4 of Section 28, Township 22 North, Range 4 East of the Third Principal Meridian, City of LeRoy, McLean County, Illinois.

Surveyor's Certificate

I, Bradley K. Shaffer, Illinois Professional Land Surveyor No. 3488, do hereby certify that to the best of my knowledge and belief the plat shown herein is an accurate representation of lands to be vacated made under my direction for Taj Hospitality Corporation.

12/07/2007
Date

Bradley K. Shaffer
Bradley K. Shaffer
Illinois Professional Land Surveyor No. 3488
License Expiration Date 11/30/08



Lewis, Yockey & Brown, Inc.
Consulting Engineers & Land Surveyors
Professional Design Firm Registration #184,000808
505 North Main Street 222 East Center Street 155 South Elm Street
Bloomington, Illinois O LeRoy, Illinois O El Paso, Illinois
Ph. (309) 829-2552 Ph. (309) 962-8151 Ph. (309) 527-2552

Prep.	411
Drawn	DYA
Checked	
Approved	BKS

VACATION PLAT
LOT 3 LEROY PLAZA SUBDIVISION
1ST ADDITION
LEROY, ILLINOIS

Sheet
1
of 1

491101X