

CITY OF LEROY  
COUNTY OF MC LEAN  
STATE OF ILLINOIS

ORDINANCE NO. 00-12-04-50

AN ORDINANCE VACATING PORTIONS OF PLATTED EASEMENTS IN A PART OF DEMMA INDUSTRIAL PARK, A PLATTED SUBDIVISION, IN THE CITY OF LE ROY, MC LEAN COUNTY, ILLINOIS

---

ADOPTED BY THE CITY COUNCIL OF THE CITY OF LE ROY  
THIS 4th DAY OF December, 2000.

PRESENTED: December 4, 2000

PASSED: December 4, 2000

APPROVED: December 4, 2000

RECORDED: December 4, 2000

PUBLISHED: December 4, 2000

In Pamphlet Form


Voting "Aye" 3

Voting "Nay" 1

---

The undersigned being the duly qualified and acting City Clerk of the City of LeRoy does hereby certify that this document constitutes the publication in pamphlet form, in connection with and pursuant to Section 1-2-4 of the Illinois Municipal Code, of the above-captioned ordinance and that such ordinance was presented, passed, approved, recorded and published as above stated.

(SEAL)

  
City Clerk of the City of LeRoy,  
McLean County, Illinois

Dated: December 4, 2000.



ORDINANCE NO. 00-12-04-50

AN ORDINANCE VACATING PORTIONS OF PLATTED EASEMENTS IN A PART OF DEMMA INDUSTRIAL PARK, A PLATTED SUBDIVISION, IN THE CITY OF LE ROY, MC LEAN COUNTY, ILLINOIS

WHEREAS, a request has been received from the owner of property consisting of Lots 4 and 5, Lots 7 and 8, and Lots 11 and 13 in the Demma Industrial Park Subdivision, a subdivision in the City of LeRoy, McLean County, Illinois, requesting vacation of platted utility easements as shown on the plat of the aforesaid subdivision; and

WHEREAS, the Mayor and City Council of the City of LeRoy, McLean County, Illinois, an Illinois municipal corporation, find that it is in the public's best interest to vacate the portions of said easements as hereinafter described, as said easements would otherwise present an impediment to the development of the aforesaid lots,

NOW, THEREFORE, BE IT ORDAINED, by the City Council of the City of LeRoy, McLean County, Illinois, in lawful meeting assembled, as follows:

Section 1. The easements as hereinafter described in this section are no longer required for the use of public utilities in connection with the development of the lots hereinafter described in Demma Industrial Park, a subdivision platted in the City of LeRoy, McLean County, Illinois, and the interests of the owners of said lots as well as the public's interests will be subserved by vacating the portions of those easements as described hereafter. The easements intended to be vacated in accordance with this ordinance are legally described as follows:

*Tract 1 - easement vacation legal description: The East 6 feet of Lot 4 in Demma Industrial Park in the City of LeRoy, McLean County, Illinois, EXCEPT the North 12 feet thereof;*

*Tract 2 - easement vacation legal description: The North 6 feet of Lot 8 in Demma Industrial Park in the City of LeRoy, McLean County, Illinois, EXCEPT the East 12 feet thereof;*

*Tract 3 - easement vacation legal description: The West 6 feet of Lot 11 in Demma Industrial Park in the City of LeRoy, McLean County, Illinois;*

*Tract 4 - easement vacation legal description: The East 6 feet and the North 6 feet of Lot 13 in Demma Industrial Park in the City of LeRoy, McLean County, Illinois,*

(all of the aforesaid easements being vacated are further shown on a copy of a plat of the aforesaid subdivision, attached hereto as Exhibit A and incorporated herein by reference) and the same shall be and are hereby vacated.

Section 2. Vacation of the public utility's interests and of the public's interests in the aforesaid portions of the easements described herein shall not abridge or destroy the right or privileges of any other proprietor or property shown on the final plat of said subdivision. Said vacations do not constitute a closing or obstructing of any public way, nor do they constitute a closing or obstructing of any easement currently used by any public utility, and, for that reason, and only to the extent that said final plat conflicts with the provisions of this vacation ordinance, the final plat of the aforesaid Demma Industrial Park to the City of LeRoy, McLean County, Illinois, shall be and the same is hereby vacated in part.

Section 3. A certified copy of this ordinance shall be filed by the City Clerk of the City of LeRoy, Illinois, for recording in the Office of Recorder of Deeds in McLean County, Illinois.

Section 4. This ordinance shall be in full force and effect from and after its passage, approval and publication in pamphlet form as required by law, and upon the fulfillment of the conditions set forth previously herein.

PASSED by the City Council of the City of LeRoy, Illinois, upon the motion by .....

Dawn Thompson ....., seconded by Ron Litherland ....., by roll call vote on the 4th day of December, 2000, as follows:

Aldermen elected 6 Aldermen present 4

VOTING AYE:

Dawn Thompson, Ron Litherland, W. H. Weber

(full names)

VOTING NAY:

Ryan Miles

(full names)

ABSENT:

Dave McClelland, Steve Dean

(full names)

ABSTAIN:

none

(full names)

OTHER:

none

(full names)

and deposited and filed in the office of the City Clerk in said municipality on the 4th day of December, 2000.

X Sue Marcum  
Sue Marcum, City Clerk of the City of LeRoy,  
McLean County, Illinois

APPROVED BY the Mayor of the City of LeRoy, Illinois, this 4th day of December, 2000.

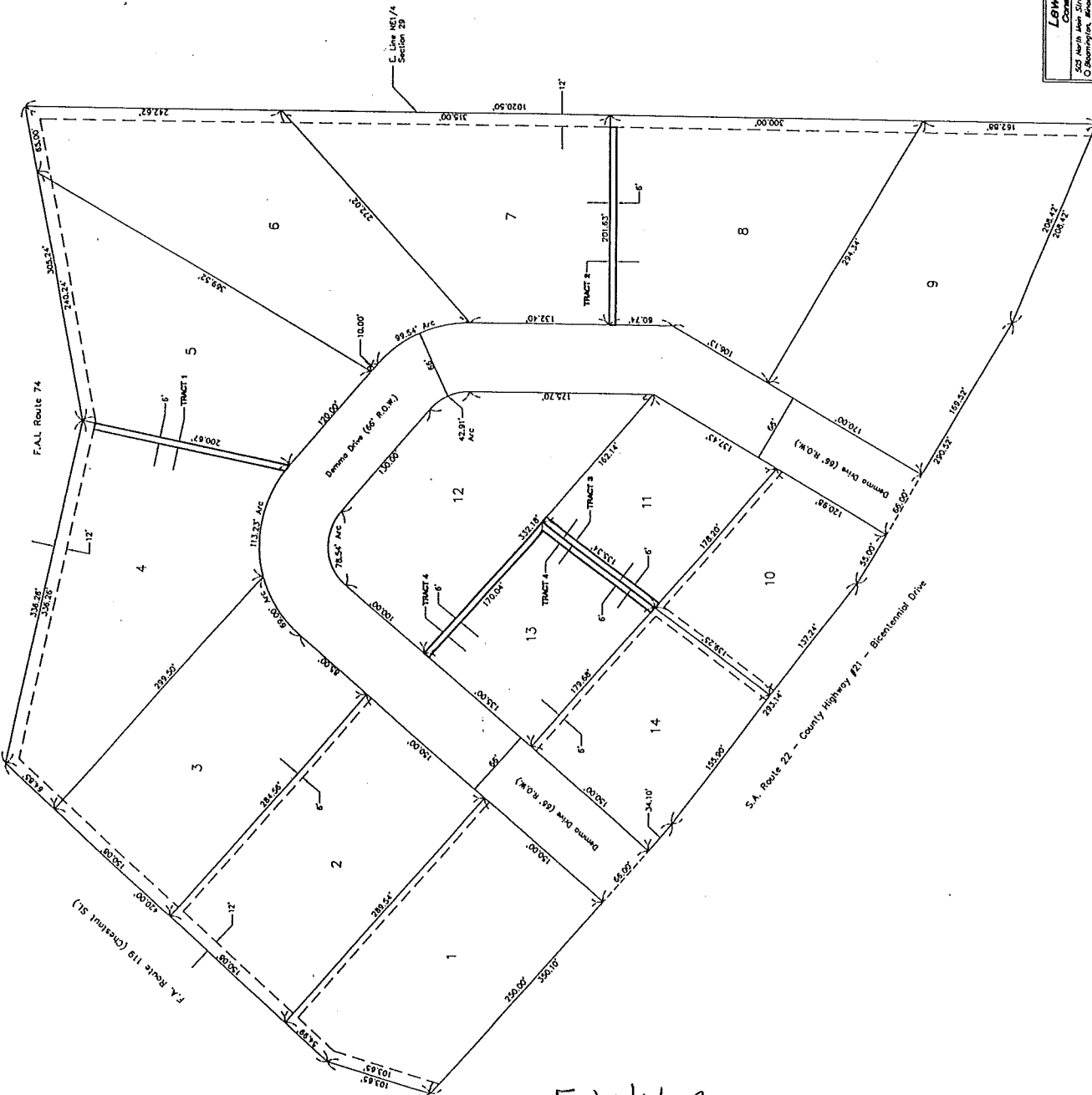
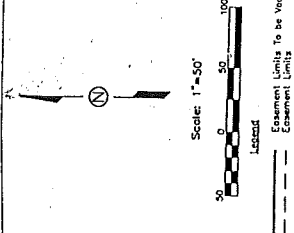
X Robert Rice  
Robert Rice, Mayor of the City of LeRoy,  
McLean County, Illinois

ATTEST: (SEAL)

X Sue Marcum  
Sue Marcum, City Clerk of the City  
of LeRoy, McLean County, Illinois

# EASEMENT VACATION PLAT

A part of Demma Industrial Park,  
City of LeRoy, McLean County, Illinois



- Easement Location Legal Description - Tract 1  
The East 6 feet of Lot 4 in Demma Industrial Park in the City of LeRoy, McLean County, Illinois, EXCEPT the North 12 feet thereof.
- Easement Location Legal Description - Tract 2  
The North 6 feet of Lot 8 in Demma Industrial Park in the City of LeRoy, McLean County, Illinois, EXCEPT the East 12 feet thereof.
- Easement Location Legal Description - Tract 3  
The West 8 feet of Lot 11 in Demma Industrial Park in the City of LeRoy, McLean County, Illinois.
- Easement Location Legal Description - Tract 4  
The East 6 feet and the North 6 feet of Lot 13 in Demma Industrial Park in the City of LeRoy, McLean County, Illinois.

### Surveyor's Certificate

I, Perry L. Lewis, Illinois Professional Land Surveyor No. 18774, do hereby certify that to the best of my knowledge and belief the plat shown hereon is an accurate representation of easement locations as indicated under my direction.

10/20/2000 Date  
 Perry L. Lewis  
 Illinois Professional Land Surveyor No. 18774



<b>Lewis, Yockey &amp; Brown, Inc.</b> Consulting Engineers & Land Surveyors 503 North Main Street O'Fallon, Illinois Ph. (618) 437-2252		Mr. SBE Mr. BCS Mr. JCS Mr. PLS
277 East Center Street O'Fallon, Illinois Ph. (618) 437-2252		155 South Elm Street O'Fallon, Illinois Ph. (618) 437-2252

City of LeRoy  
 Demma Industrial Park  
 Easement Vacation Plat

Exhibit A.

CERTIFICATE

I, Sue Marcum, certify that I am the duly elected and acting municipal clerk of the City of LeRoy, of McLean County, Illinois.

I further certify that on December 4, 2000, the Corporate Authorities of such municipality passed and approved Ordinance No. 00-12-04-50, entitled:

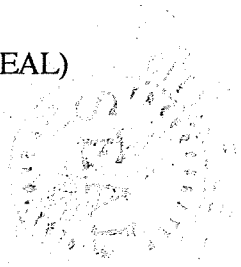
AN ORDINANCE VACATING PORTIONS OF PLATTED EASEMENTS IN A PART OF DEMMA INDUSTRIAL PARK, A PLATTED SUBDIVISION, IN THE CITY OF LE ROY, MC LEAN COUNTY, ILLINOIS,

which provided by its terms that it should be published in pamphlet form.

The pamphlet form of Ordinance No. 00-12-04-50, including the Ordinance and a cover sheet thereof, was prepared, and a copy of such Ordinance was posted at the municipal building, commencing on December 4, 2000, and continuing for at least ten days thereafter. Copies of such Ordinance were also available for public inspection upon request in the office of the municipal clerk.

Dated at LeRoy, Illinois, this 4th day of December, 2000.

(SEAL)



Sue Marcum  
Municipal Clerk

STATE OF ILLINOIS        )  
                                  ) SS:  
COUNTY OF McLEAN      )

I, Sue Marcum, do hereby certify that I am the duly qualified and acting City Clerk of the City of LeRoy , McLean County, Illinois, and as such City Clerk that I am the keeper of the records and files of the Mayor and the City Council of said City.

I do further certify that the foregoing is a true, correct and complete copy of an ordinance entitled:  
**AN ORDINANCE VACATING PORTIONS OF PLATTED EASEMENTS IN A PART OF DEMMA INDUSTRIAL PARK, A PLATTED SUBDIVISION, IN THE CITY OF LE ROY, MC LEAN COUNTY, ILLINOIS.**

I do further certify said ordinance was adopted by the City Council of the City of LeRoy at a regular meeting on the 4th day of December , 2000, and prior to the making of this certificate the said ordinance was spread at length upon the permanent records of said City where it now appears and remains as a faithful record of said ordinance in the record books.

Dated this 4th day of December , 2000.

  
\_\_\_\_\_  
City Clerk

